

# STANDARD Q COVID-19 Ag Home Test <sup>EN</sup>

COVID-19 Antigen Home Test Quick reference instruction

Fast result in 15 minutes | Nasal Test  SD BIOSENSOR



Study the Instructions for Use and User Manual thoroughly before using Quick Reference Instructions. This is not a complete Instructions for Use.

After looking at the diagram below and familiarizing yourself with how to use it, follow the instructions below.



Video Guide

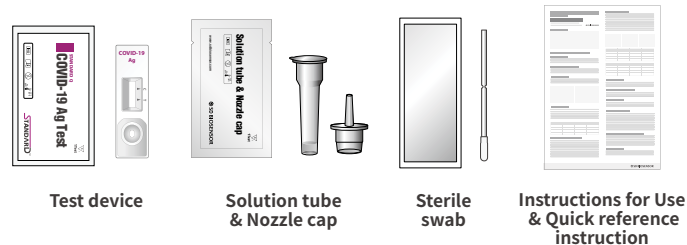
## STEP 1 PREPARATION

1 Wash your hands.

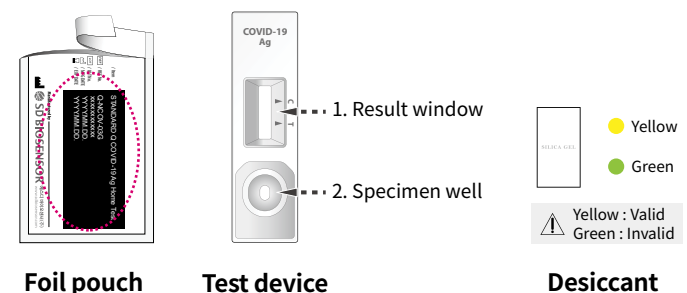


It is recommended to wear gloves when using the product.

2 Check the kit contents before testing.

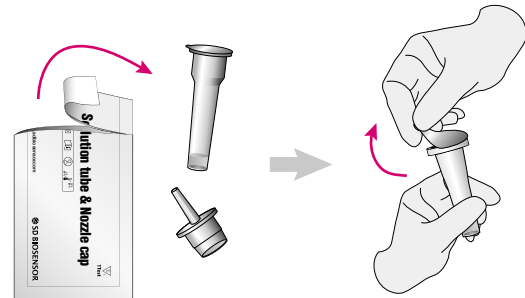


3 Check the expiry date at the back of the foil pouch. After open the foil pouch, check the test device and the desiccant pack in the foil pouch.

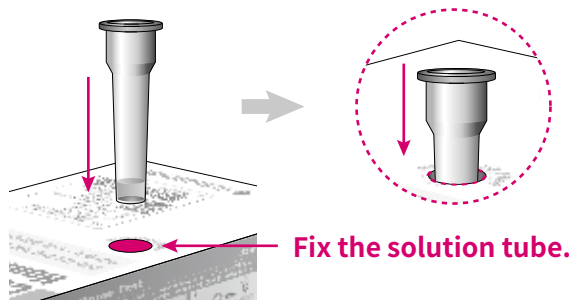


## STEP 2 SAMPLE COLLECTION

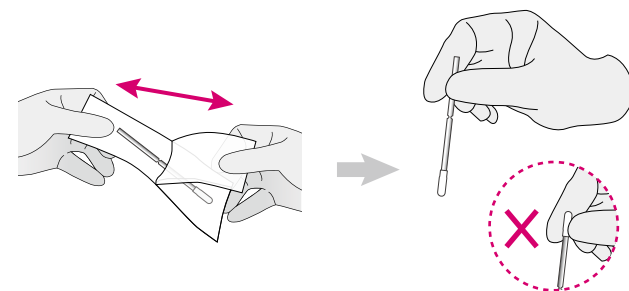
4 Open the Solution tube & Nozzle cap pouch and the seal of solution tube.



5 Set the solution tube on the stand hole of the package.

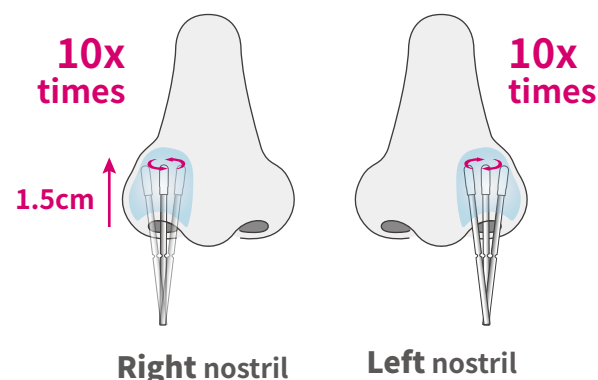


6 Open the sterile swab pouch and hold the swab.



! Do not touch swab tip when handling swab sample.

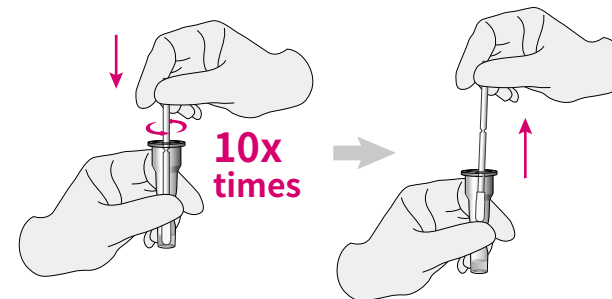
7 Insert the sterile swab and rotate for both side of nostrils. The sterile swab should be entered in less than one inch (about 1.5cm) into nostril parallel to the palate until resistance is met at turbinates.



! Do not soak the swab in the solution tube or other liquid until you put it into the nasal cavity.

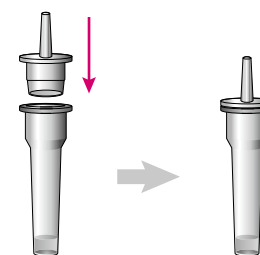
## STEP 3 TEST PROCEDURE

8 Insert the swab into an solution tube. While squeezing the solution tube, stir the swab more than 10 times. Remove the swab while squeezing the sides of the tube to extract the liquid from the swab.

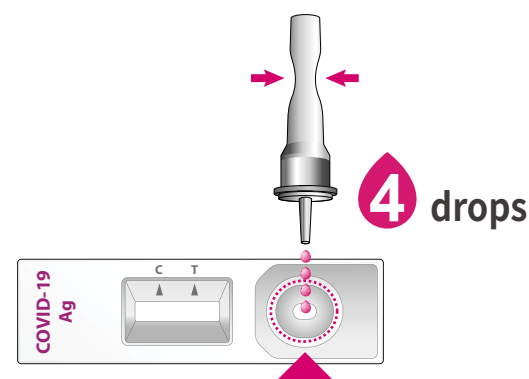


In case of contact with your skin or eyes, wash immediately with plenty of water.

9 Press the nozzle cap tightly onto the tube.



10 Apply 4 drops of extracted sample to the sample well of the test device.



Do not squeeze out all of the solution in the solution bottle.

11 Read the test result in 15 minutes.



Read in 15 minutes



Do not read test results after 30 minutes.

## STEP 4 INTERPRETATION OF TEST RESULT

### Negative

Negative result: A colored band will appear only control line(C) on the result window.



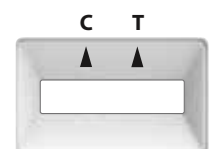
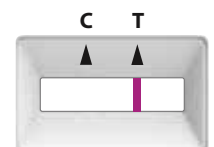
### Positive

Positive result: Colored bands will appear both control line(C) and test line(T) on the result window.



### Invalid

Retest: If the control line(C) is not appeared in the result window, it is an invalid result. Retest using a new sample and device.



\* Positive results should be considered in conjunction with the clinical history and other data available.

\* Even if the control line is faint, or the test line isn't uniform, the test should be considered to be performed properly and the test result should be interpreted as a positive result.

**Biomedica**  
SPD Scientific 

Distributed by  
**SPD Scientific Pte Ltd**  
192 Pandan Loop 06-20  
Pantech Business Hub  
Singapore 128381

Customer Hotline  
[hotline@sdccovidtestkit.com](mailto:hotline@sdccovidtestkit.com)